

新款的D-SCOPE MT放大镜是当前市场上检测MTP/MPO连接器端面速度最快的产品。

每次测试的时候,D-SCOPE-MT检测每根光纤表面情况,允许操作人员把控连接器端面 and 导向孔的清洁状况。

全自动检测的D-SCOPE MT是用于检测连接器端面是否符合IEC标准的理想仪表。

在保证极高测量精度的前提下,D-SCOPE MT设计理念为适合大批量生产环境或者有严苛要求的实验室用途。



### 主要特点:

测试PC/APC端面的连接器及插芯, 光纤数量从1芯到64芯

超快的测量速度

自动Pass/Fail判定

自动聚焦

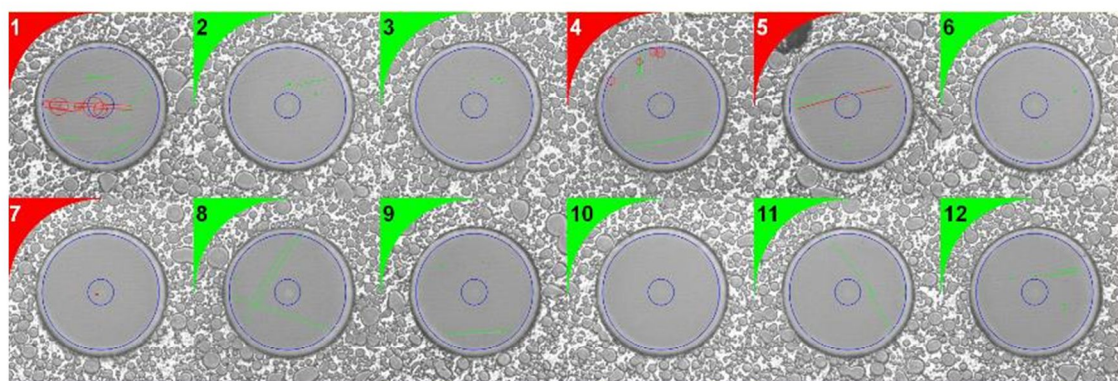
高分辨率可以测量0.5  $\mu\text{m}$ 的端面瑕疵

符合IEC 61300-3-35

实时全端面观测

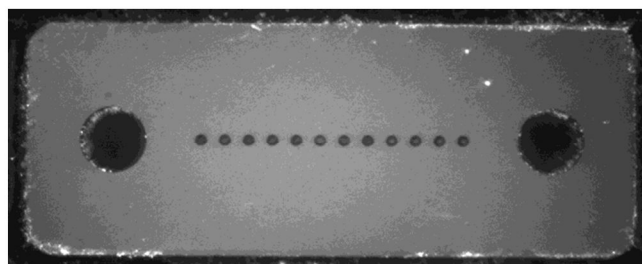
直观的Blink软件

兼容台式电脑, 手提电脑, 平板电脑



### 测量时间:

| Connector type | Fiber screening only | with Endface view |
|----------------|----------------------|-------------------|
| MT12           | 2 sec.               | < 5 sec.          |
| MT48           | 5 sec.               | 5 sec.            |



## 典型测试报告(MT12芯):

| Zone A: Core   |         |           | Zone B: Cladding  |   |           |
|--|---------|-----------|---|---|-----------|
| Diameter: 25 $\mu\text{m}$<br>Scratches Allowed: None<br>Defects Allowed: None |         |           | Diameter: 112 $\mu\text{m}$<br>Scratches Allowed: No limit $\leq 3\mu\text{m}$<br>None $> 3\mu\text{m}$<br>Defects Allowed: No limit $\leq 2\mu\text{m}$<br>Up to 5 from 2-5 $\mu\text{m}$<br>None $> 5\mu\text{m}$ |   |           |
| Fiber  | Defects | Scratches | Defects   | Scratches                                   | Pass/Fail |
| 1  | 2       | 4         | 0 $\leq 2\mu\text{m}$<br>2 from 2-5 $\mu\text{m}$<br>3 $> 5\mu\text{m}$   | 5 $\leq 3\mu\text{m}$<br>0 $> 3\mu\text{m}$ | FAIL      |
| 2  | 0       | 0         | 0 $\leq 2\mu\text{m}$<br>2 from 2-5 $\mu\text{m}$<br>0 $> 5\mu\text{m}$   | 1 $\leq 3\mu\text{m}$<br>0 $> 3\mu\text{m}$ | PASS      |
| 3  | 0       | 0         | 2 $\leq 2\mu\text{m}$<br>2 from 2-5 $\mu\text{m}$<br>0 $> 5\mu\text{m}$   | 0 $\leq 3\mu\text{m}$<br>0 $> 3\mu\text{m}$ | PASS      |
| 4  | 0       | 0         | 1 $\leq 2\mu\text{m}$<br>2 from 2-5 $\mu\text{m}$<br>4 $> 5\mu\text{m}$   | 2 $\leq 3\mu\text{m}$<br>0 $> 3\mu\text{m}$ | FAIL      |
| 5  | 0       | 2         | 1 $\leq 2\mu\text{m}$<br>1 from 2-5 $\mu\text{m}$<br>0 $> 5\mu\text{m}$   | 2 $\leq 3\mu\text{m}$<br>0 $> 3\mu\text{m}$ | FAIL      |
| 6  | 0       | 0         | 2 $\leq 2\mu\text{m}$<br>1 from 2-5 $\mu\text{m}$<br>0 $> 5\mu\text{m}$   | 0 $\leq 3\mu\text{m}$<br>0 $> 3\mu\text{m}$ | PASS      |
| 7  | 1       | 0         | 0 $\leq 2\mu\text{m}$<br>0 from 2-5 $\mu\text{m}$<br>0 $> 5\mu\text{m}$   | 0 $\leq 3\mu\text{m}$<br>0 $> 3\mu\text{m}$ | FAIL      |
| 8  | 0       | 0         | 1 $\leq 2\mu\text{m}$<br>0 from 2-5 $\mu\text{m}$<br>0 $> 5\mu\text{m}$   | 3 $\leq 3\mu\text{m}$<br>0 $> 3\mu\text{m}$ | PASS      |
| 9  | 0       | 0         | 0 $\leq 2\mu\text{m}$<br>1 from 2-5 $\mu\text{m}$<br>0 $> 5\mu\text{m}$   | 1 $\leq 3\mu\text{m}$<br>0 $> 3\mu\text{m}$ | PASS      |
| 10   | 0       | 0         | 0 $\leq 2\mu\text{m}$<br>0 from 2-5 $\mu\text{m}$<br>0 $> 5\mu\text{m}$   | 0 $\leq 3\mu\text{m}$<br>0 $> 3\mu\text{m}$ | PASS      |
| 11   | 0       | 0         | 1 $\leq 2\mu\text{m}$<br>0 from 2-5 $\mu\text{m}$<br>0 $> 5\mu\text{m}$   | 2 $\leq 3\mu\text{m}$<br>0 $> 3\mu\text{m}$ | PASS      |
| 12   | 0       | 0         | 3 $\leq 2\mu\text{m}$<br>1 from 2-5 $\mu\text{m}$<br>0 $> 5\mu\text{m}$   | 2 $\leq 3\mu\text{m}$<br>0 $> 3\mu\text{m}$ | PASS      |

## 规格:

|                                 |
|---------------------------------|
| 放大倍数 : x 400                    |
| 瑕疵尺寸 : 0.5 $\mu\text{m}$        |
| 数据接口 : USB 3.0 + USB 2.0        |
| 电压 : 12V                        |
| 尺寸 (HxWxL) : 105 x 230 x 265 mm |
| 重量 : 6,6 kg                     |

## 订货选项:

| Unit   | P/N               |
|--|-------------------|
| D-Scope MT主机包括:<br>- <i>Blink</i> 自动观测软件<br>- 两只法兰 | 71-DSMT-V1-A10-00 |
| MT插芯法兰 M/F, PC/APC, 12/16/24/32芯                   | 30-FL-002181      |
| MPO成品法兰 M/F, PC, APC, 12/24芯                       | 30-FL-002182      |
| MPO成品法兰 M/F, PC/APC, 16/32芯                        | 30-FL-002183      |
| 1.25 mm单芯法兰PC/APC                                  | 30-FL-002314      |
| 2.5 mm单芯法兰 PC/APC                                  | 30-FL-002315      |

