

INSPECTION D SCOPE MT



D SCOPE MT

High resolution microscope for Multi-Fiber connectors

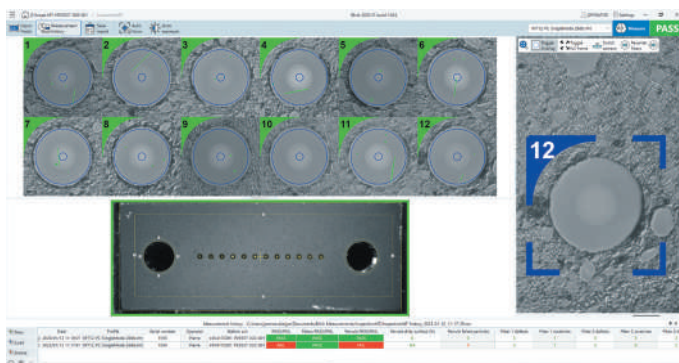
The D SCOPE MT microscope for MTP/MPO connectors is **highly repeatable and extremely fast**.

In the same measurement cycle, D Scope MT checks every optical fiber surface condition, and **allows the operator to control the cleanliness of the connector endface and guideholes**.

The fully automatic D SCOPE MT is the **ideal instrument for checking the conformity of connectors to Industry Standards**.

With BLINK, the Data-Pixel software platform, D Scope MT uses Deep Learning technology. **This AI has the advantage of improving the detection of defects, but above all, of being scalable**. If you want to deal with specific defect or atypical fiber cases, **Blink's Deep Learning can be taught to recognize defects from your samples**.

With very high measurement accuracy, D SCOPE MT has been designed for use in **high volume manufacturing environments or the most demanding laboratories**.



KEY FEATURES :

Testing of PC/APC connectors and ferrules from 1 to 64 fibers

Ultra-fast measurement time

Automatic Pass/Fail defect analysis

Automatic focus adjustment

High resolution optics with defect size detection of 0.3µm

Compliance with Industry Standards as IEC 61300-3-35

Real time full connector endface view

Intuitive Blink software with database connectivity

Compatible with desktop PC, laptop, tablet PC

DEEP LEARNING
INSIDE

MEASUREMENT TIMES :

| CONNECTOR TYPE | FIBER SCREENING ONLY | WITH END FACE VIEW |
|----------------|----------------------|--------------------|
| MT 12 | 3 sec. | 5 sec. |
| MT 24 | 5 sec. | 7 sec. |

SPECIFICATIONS :

| | |
|-----------------------------------|-----------------|
| Magnification (fiber screening) : | x480* |
| Defect size detection (µm) : | 0.3 |
| Outputs : | USB 3.0 + 2.0 |
| Power source : | 12V |
| Dimensions H x W x L (mm) : | 105 x 230 x 285 |
| Weight (kg) : | 7 |

*On 24" screen, 96 dpi

TYPICAL REPORT (FOR MT 12):

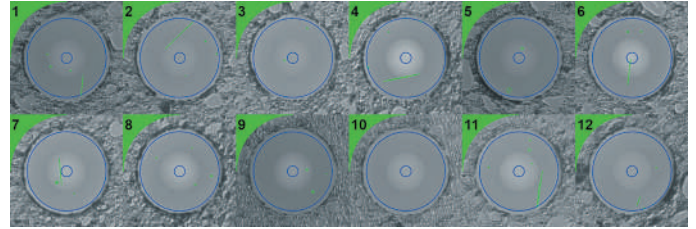
Inspection MT report Generated by Blink Data-Pixel

| | | | | |
|--------------------|----------------------------------|---------------|---------------------------|-------------|
| Date | 2023-01-12 11:05 | Serial number | 1550 | FAIL |
| Measurement device | D Scope MT | Operator | Pierre | |
| Device s/n | 4104170281-P03537-020-001 | Station s/n | 4104170281-P03537-020-001 | |
| Profile | MT12-PC-SingleMode 25db Copy.lmt | | | |
| Fiber diameter | 125µm | | | |

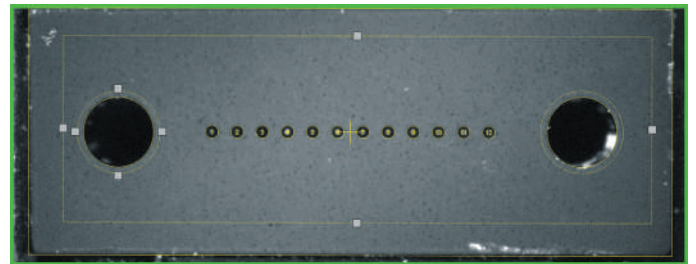
| Ferrule control | Allowed | Measured | Pass/Fail |
|----------------------------|---------|----------|-----------|
| Dirty surface (%) | 5% | 1.179% | PASS |
| Number of failed particles | 0 | 28 | FAIL |

| Zone A: Core | | | Zone B: Cladding | | | Pass/Fail |
|--------------|--|--------------------|--|------------------------------------|------|-----------|
| Fiber | Defects | Scratches | Defects | Scratches | | |
| | Diameter: 15 µm Scratches Allowed: Up to 2 ≤ 3µm None > 3µm Defects Allowed: None | | Diameter: 110 µm Scratches Allowed: No limit ≤ 3µm Up to 3 from 3-5µm None > 5µm Defects Allowed: No limit ≤ 5µm Up to 5 from 5-10µm None > 10µm | | | |
| 1 | 0 | 0 ≤ 3µm 0 > 3µm | 1 ≤ 5µm 0 from 5-10µm 0 > 10µm | 1 ≤ 3µm 0 from 3-5µm 0 > 5µm | PASS | |
| 2 | 0 | 0 ≤ 3µm 0 > 3µm | 3 ≤ 5µm 0 from 5-10µm 0 > 10µm | 0 ≤ 3µm 0 from 3-5µm 0 > 5µm | PASS | |
| 3 | 0 | 0 ≤ 3µm 0 > 3µm | 2 ≤ 5µm 0 from 5-10µm 0 > 10µm | 0 ≤ 3µm 0 from 3-5µm 0 > 5µm | PASS | |
| 4 | 0 | 0 ≤ 3µm 0 > 3µm | 2 ≤ 5µm 0 from 5-10µm 0 > 10µm | 2 ≤ 3µm 0 from 3-5µm 0 > 5µm | PASS | |
| 5 | 0 | 0 ≤ 3µm 0 > 3µm | 4 ≤ 5µm 0 from 5-10µm 0 > 10µm | 0 ≤ 3µm 0 from 3-5µm 0 > 5µm | PASS | |
| 6 | 0 | 0 ≤ 3µm 0 > 3µm | 2 ≤ 5µm 0 from 5-10µm 0 > 10µm | 1 ≤ 3µm 0 from 3-5µm 0 > 5µm | PASS | |
| 7 | 0 | 0 ≤ 3µm 0 > 3µm | 1 ≤ 5µm 2 from 5-10µm 0 > 10µm | 0 ≤ 3µm 0 from 3-5µm 0 > 5µm | PASS | |
| 8 | 0 | 0 ≤ 3µm 0 > 3µm | 2 ≤ 5µm 0 from 5-10µm 0 > 10µm | 2 ≤ 3µm 0 from 3-5µm 0 > 5µm | PASS | |
| 9 | 0 | 0 ≤ 3µm 0 > 3µm | 3 ≤ 5µm 0 from 5-10µm 0 > 10µm | 0 ≤ 3µm 0 from 3-5µm 0 > 5µm | PASS | |
| 10 | 0 | 0 ≤ 3µm 0 > 3µm | 4 ≤ 5µm 0 from 5-10µm 0 > 10µm | 0 ≤ 3µm 0 from 3-5µm 0 > 5µm | PASS | |
| 11 | 0 | 0 ≤ 3µm 0 > 3µm | 2 ≤ 5µm 1 from 5-10µm 0 > 10µm | 1 ≤ 3µm 0 from 3-5µm 0 > 5µm | PASS | |
| 12 | 0 | 0 ≤ 3µm 0 > 3µm | 5 ≤ 5µm 1 from 5-10µm 0 > 10µm | 1 ≤ 3µm 0 from 3-5µm 0 > 5µm | PASS | |

AUTOMATIC PASS/FAIL RESULT ON FIBER DEFECTS :



AUTOMATIC PASS/FAIL RESULT ON FULL MT FERRULE CLEANLINESS :



INSPECTION OF A LC DUPLEX CONNECTOR :



Thanks to its wide field of view camera, the Dscope MT allows to scan both ferrules of Duplex connectors in one shot whether it is LC Duplex or Very Small Form Factor connectors (CS, SN, MDC,...).

It represents a substantial time saving as the inspection results for both ferrules are obtained simultaneously without having to manipulate the connector.

ORDER OPTIONS :

| | |
|---|------------------------------|
| D Scope MT unit with Blink Inspection SF & MT | 70-DSMT-V1-A10-00 |
| Flange MT Male/Female, PC/APC, 12/16/24/32 fibers | 30-FL-002181 |
| Flange MPO Male/Female, PC/APC, 12/16/24/32 fibers | 30-FL-003277 |
| Flange Single-Fiber 1.25 mm PC/APC | 30-FL-002314 |
| Flange Single-Fiber 2.50 mm PC/APC | 30-FL-002315 |
| Flange Optitap PC/APC 2.50mm | 30-FL-003429 |
| Flange Duplex Single-Fiber 1.25mm (LC, MDC, CS, SN,...) | Several references available |