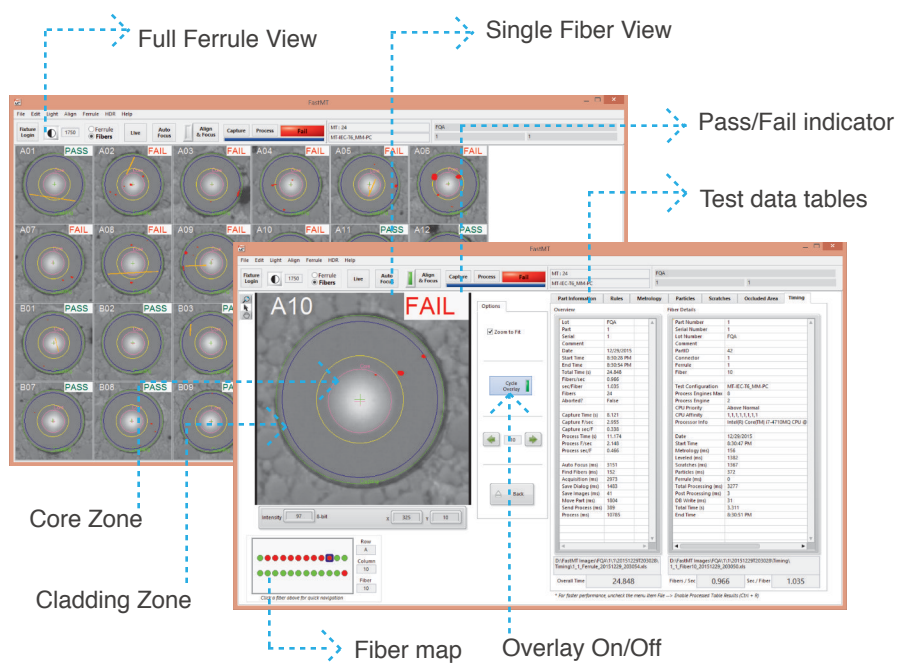


FastMT Data Sheet



FastMT Software

FastMT provides many options including view changes, pass/fail criteria by zone, and more. View test data in easy-to-read tables. These tables provide information on the size and location of every defect, why it passed or failed specific criteria, and timing information so you can maintain accurate records and even run studies.



Specifications

Spec	Value
Size	5.25in x 5.25in x 12in
Weight	12 lbs
Connection	USB 3.0
Power	110V / 2A
80x FOV	8.049 x 5.770
200x FOV	3.220 x 2.308
400x FOV	1.610 x 1.154
80x Res	2.09 um/pixel
200x Res	0.84 um/pixel
400x Res	0.42 um/pixel
Warranty	One Year
Support	90 days
Minimum PC Requirements:	
<ul style="list-style-type: none"> • Quad Core i7 • 16 MB RAM • 512 GB HDD • Windows 7 or Windows 8,1 • USB 3.0 port using FTDI chipset 	

PASS/FAIL Processing Times

FastMT-200x			FastMT-400x	
MT	Total Time	# Fibers/sec	Total Time	# Fibers/sec
12	12	1.0	19	0.6
24	16	1.5	22	1.1
48	27	1.8	30	1.6
72	35	2.0	38	1.9

*Times are based on average results. Individual results may vary. PC processing capability can increase or reduce inspection times. See minimum requirements.

More Features

- ✓ Turn overlay on/off
- ✓ HDR processing
- ✓ Enhanced contrast view
- ✓ Zero insertion force fixtures
- ✓ Cable backlight option

