

- PRECISION OPTICAL POLISHING**
- EXTERNAL PC CONTROL WITH MICROFEED™**
- INDEPENDENT SUSPENSION WORKHOLDERS**
- SUPPORTS ALL INDUSTRY STANDARD AND MIL-SPEC CONNECTORS/TERMINI**
- AIR POLISHING IN MACHINE**
- TELCORDIA COMPLIANT**



SPECIFICATIONS AND FEATURES

Polishing Performance¹

- Apex Offset**
<50 microns, maximum
<15 microns, typical
- Radius of Curvature**
10-25 mm, 2.5 mm ferrules
7-20 mm, 1.25 mm ferrules
5-12 mm, APC ferrules
- Undercut/Protrusion²**
0 to -50 nm

¹ Polishing performance meets and exceeds Telcordia specifications, and can be optimized for specific applications.
² Dependent upon radius of curvature.

Optical Performance³

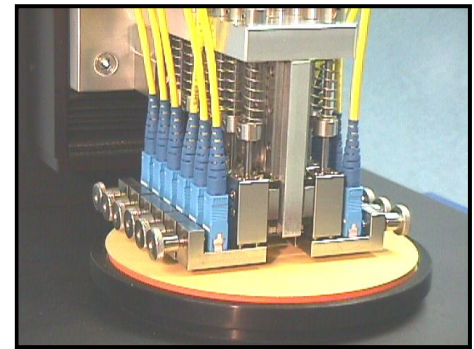
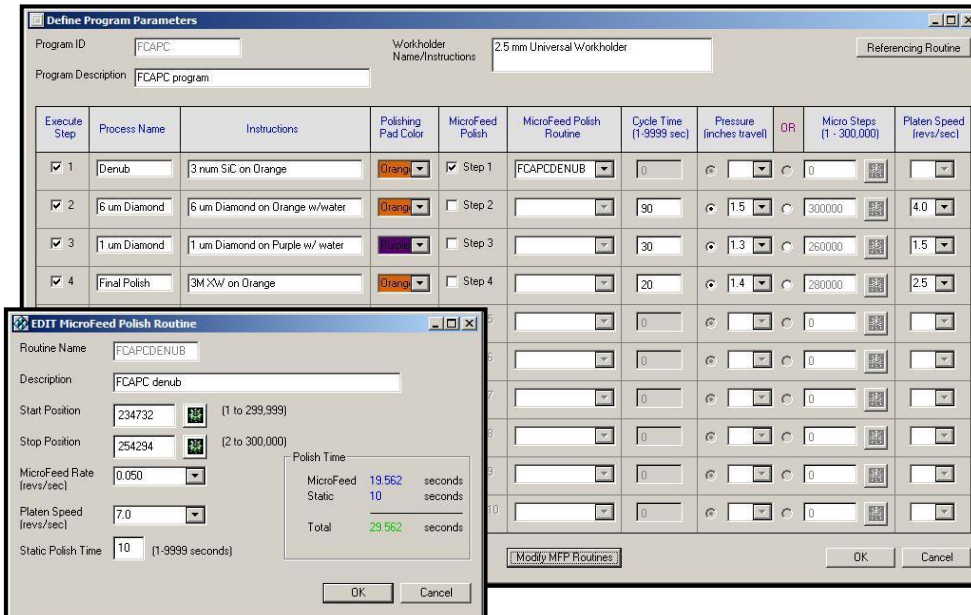
- Back Reflection**
< -60 dB, UPC
< -65 dB, APC
- Insertion Loss**
< 0.25 dB, typical

³ Optical performance may vary between connector manufacturers.

Operational

- Connector Capacity**
Up to 12 connectors
- Connector Support**
All industry standard, MIL-spec and custom connectors/termini
- Process Time⁴**
Approximately 30 sec/connector
- Polishing Pressure**
Programmable, sub-micron, automated, linear displacement
- Polishing Speed**
Program selectable
- Cycling Timing**
Program selectable
- Polishing Motion**
Random orbital

⁴ Singlemode UPC/APC finish.



Scepter workholders feature Independent Suspension (IS) at each connector position for controlled pressure and uniform contact with the polishing surface. IS permits air polishing while maximizing film life. Each position is optically aligned for optimal polish geometry (patent pending).

Scepter features an intuitive user interface for creating polishing programs. All polishing parameters including cycle time, pressure and speed settings are easily inputted for all connector types and desired surface geometries.