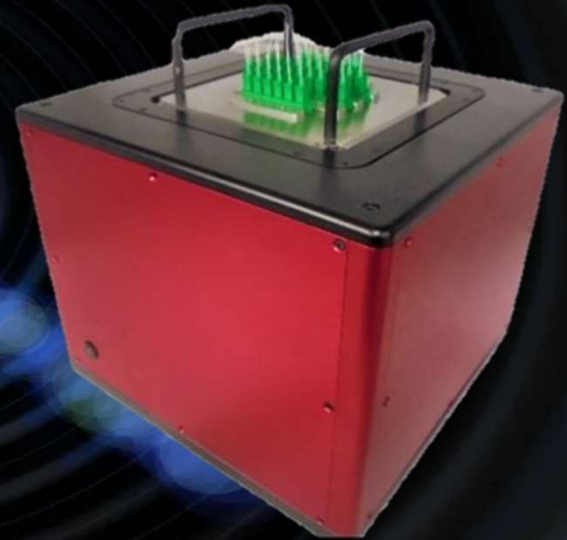


Newest Fiber Auto Inspection System FAIS



Partnership with  HM SOLUTION CO.,LTD

FAIS (Fiber Auto Inspection System)

This is an automated inspection system that can perform the inspection by the polishing holders after polished passive elements such as ferrules, and optical connectors/cables. It's providing innovative efficiency for the manufacturers and their production of optical passive components/devices. The long-awaited MT ferrule inspection is now available.

KEY FEATURES

- Providing 4 types of automation (Auto-Position, Auto-Center, Auto-Focus, Auto-Inspection)
- Fast and constant inspection by IEC standards
- End face inspection of connectors while mounted on polishing holder
- Both SF connector and MT ferrule can be inspected with 1 FAIS
- Intuitive distinguish pass/fail result (Graphic indicator)
- Enables data management (Reporting, Statistics)
- Barcode scanning for automation (Action on Scan option) inspection
- Support central data collection

APPLICATIONS

- Pre-inspection after polished connectors at the manufacturer
- Final inspection of Passive components & assembly
- Detecting Scratch, Pit, Contamination on connector end face
- Management of polishing holders quality



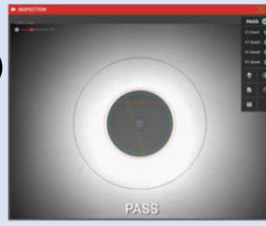
SEIKOH GIKEN

www.seikoh-giken.com

FAIS data sheet

PERFORMANCE

- Less than 5sec per port for Inspection (Positioning, Auto Focusing and Save a result)
- Inspection Profile according to IEC (Create/Edit/Delete)
- Allow Full inspection and Single inspection

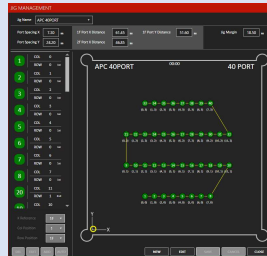


GUI FOR SF CONNECTOR



POLISHING HOLDER MANAGEMENT

- Support all types of polishing holders layout
- Store data with S/N of each polishing holder
- Easy import/export polishing holder profiles



GUI FOR MT FERRULE



■ GENERAL SPECIFICATIONS

PARAMETER	SPECIFICATION
Dimension (mm)	320 x 320 x 300
Weight (kg)	Approx. 15.00
Operational Temp (°C) / Hum (%)	-10 to 50 / 5% to 95%, relative, non-condensing
Storage Temp (°C) / Hum (%)	-15 to 65 / 5% to 95%, relative, non-condensing
Power Input	24VDC via AC/DC Adaptor, (AC Input: 100 to 240VAC)

■ TECHNICAL SPECIFICATIONS

PARAMETER	SPECIFICATION
Inspection Area (X, Y)	130mm x 130mm (depending on the type of mount)
Method of Focus	Liquid Lens
Max Focusable Distance	< 1.00 mm
Inspection Speed (Including Positioning, Focusing, Saving Result)	Less than 5sec (depending on the type of products)
FOV (Field of View)	Depending on Objectives
Min. Resolution	7.94um@X/Y Axis, 3.18um@Z Axis
Holder (Products) Profiles	Acceptable all types of polishing holder

■ ORDERING INFORMATION

PART NO	DESCRIPTIONS
FAIS-01-00 ⁽¹⁾	Fiber Auto Inspection System with Inspection only Included Square shape mount, 24VDC AC/DC Adaptor, USB3.0 Cable, Installation USB memory stick

(1) Requires, External PC or Laptop for operation (Windows Based)

China Distributor:

Shenzhen Richen Industry Co., Ltd

Tel: +86 755 86655593 ; 86655448 ; 86655579

Website: www.pztest.com Email: info@pztest.com

Seikoh Giken reserves the right to improve, enhance and modify features and specifications of Seikoh Giken products without prior notifications



SEIKOH GIKEN

www.seikoh-giken.com

Ver. E1.2