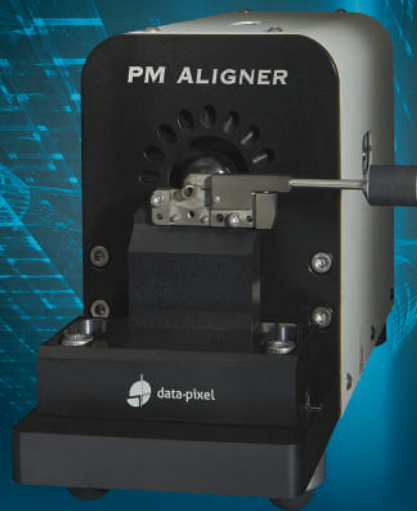


# INSPECTION PM ALIGNER-V2



## PM ALIGNER-V2

*A ready-to-use solution to orientate Polarization Maintaining fibers inside connectors*

PM Aligner-V2 is the simplest way to **orientate precisely a PANDA Polarization Maintaining fiber** inside a connector or ferrule.

With a **long working distance**, PM Aligner-V2 allows the operator to **work manually around the ferrule** of the connector. After positioning, the curing phase becomes easy to realize without affecting on the PM fiber alignment.

With Blink PM Alignment software, the PM Aligner-V2 will measure and **display in real time the angular alignment** of the stress elements.

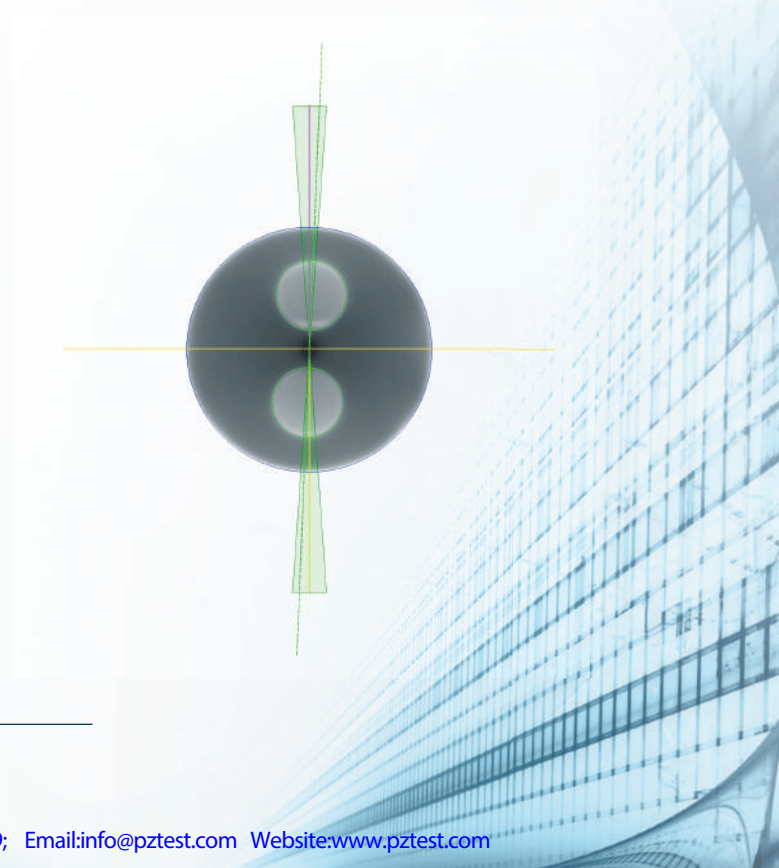
If the cable contains **several PM optical fibers** it is not easy to turn the optical fiber in the ferrule. Thus Data-Pixel developed **custom accessories** that keeps the optical fiber fixed and **rotates the ferrule or the connector**.

### SPECIFICATIONS:

Magnification :	X 400
Field of View (mm) :	0.7 x 0.5
Light Source :	White light
Focus :	Manual
Outputs :	USB 2.0
Power source :	External 12V
Weight (kg) :	3.2
Dimensions HxWxL (mm) :	130 x 90 x 260

### KEY FEATURES :

Measurement of PANDA style fibers
Long working distance
Automated and real time measurement
Easy calibration with Blink PM Alignment
High speed USB 2.0 for live digital image
Measurement data exported in standard CSV file
Database connectivity
Measurement report in HTML format
Compatible with desktop PC, laptop, tablet PC

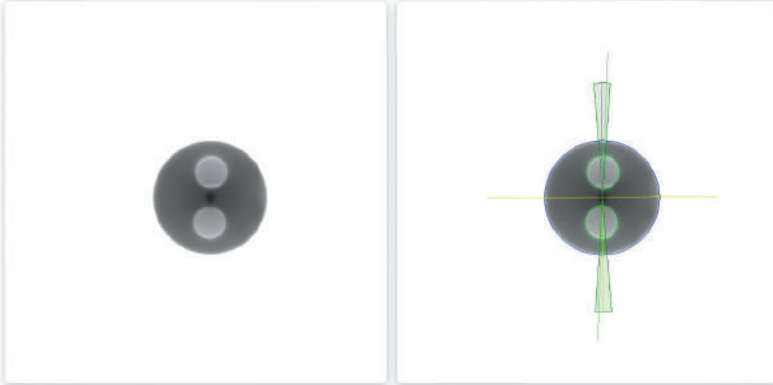


### Panda report

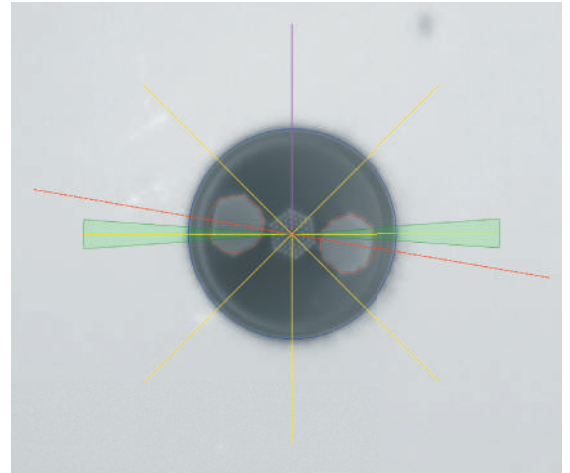
Generated by Blink Data-Pixel

Date	2023-01-18 17:59	Sample name	Panda Fiber	PASS
Measurement device	PM Aligner	Serial number	2023-01-xxx14	
Device s/n	4103585910-P06950-010-001	Operator	John	
Reference fiber diameter	125µm	Station s/n	4103585910-P06950-010-001	
Reference rod diameter	36µm			

Parameter	min allowed	max allowed	Measurement result	Pass/Fail
Panda angle	-4 °	4 °	2.33 °	PASS



Blink software detects automatically the stress rods regardless of their shapes (circular, hexagonal,...) and allows a precise alignment of PM fibers.

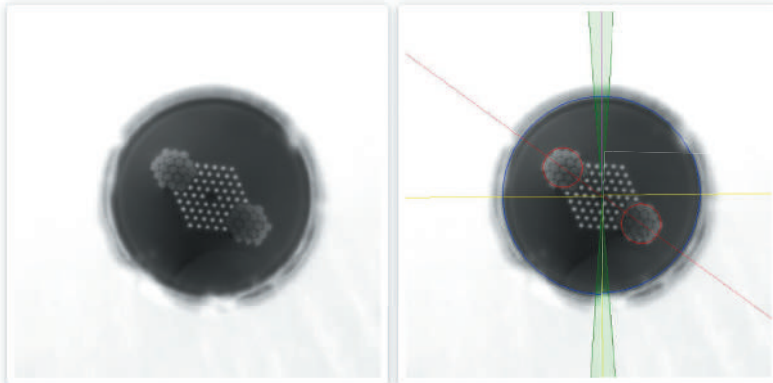


### Panda report

Generated by Blink Data-Pixel

Date	2023-01-18 18:25	Sample name	PCF Fiber	FAIL
Measurement device	PM Aligner	Serial number	2023-01-xxx239	
Device s/n	4103585910-P06950-010-001	Operator	John	
Reference fiber diameter	216µm	Station s/n	4103585910-P06950-010-001	
Reference rod diameter	43µm			

Parameter	min allowed	max allowed	Measurement result	Pass/Fail
Panda angle	-4 °	4 °	-53.65 °	FAIL



Custom development : mechanical interface equipped with a digital indicator and a rotation stage in order to precisely monitor the angle position of the connector. The fibre optic cable is clamped on the Mechanical plate.



## ORDER OPTIONS :

PM Aligner-V2 unit with :

- Manual focus
- Blink PM-Alignment

70-PM00-V2-M10-00

Holder 1.25mm ferrules, PM (sleeve-type)

30-HL-000778

Holder 2.50mm ferrules, PM (sleeve-type)

30-HL-000779

Calibration fiber stub, 1.25mm, for PM fiber calibration

30-RE-000752

Calibration fiber stub, 2.50mm, for PM fiber calibration

30-RE-000753

Adapter, 1.25mm LC

30-AD-000732

Adapter, 2.50mm SC

30-AD-000739

Adapter, APC, 2.50mm, both FC Narrow and FC Wide compatible

30-AD-002476