

INSPECTION D SCOPE



D SCOPE

High quality digital benchtop Microscope

This unique microscope combines **high quality optics** with a modern and ergonomic design ideally suited to fiber optic applications.

Until the D Scope, most microscopes were suffering from poor illumination quality yielding variable and non-reproducible image quality even amongst scopes of the same kind.

With Blink Inspection SF plugin, the D Scope is able to **detect and measure automatically scratches and defects** compatible with Industry Standards or customized parameters.

D Scope family is available with **magnification from x200 to x800**.

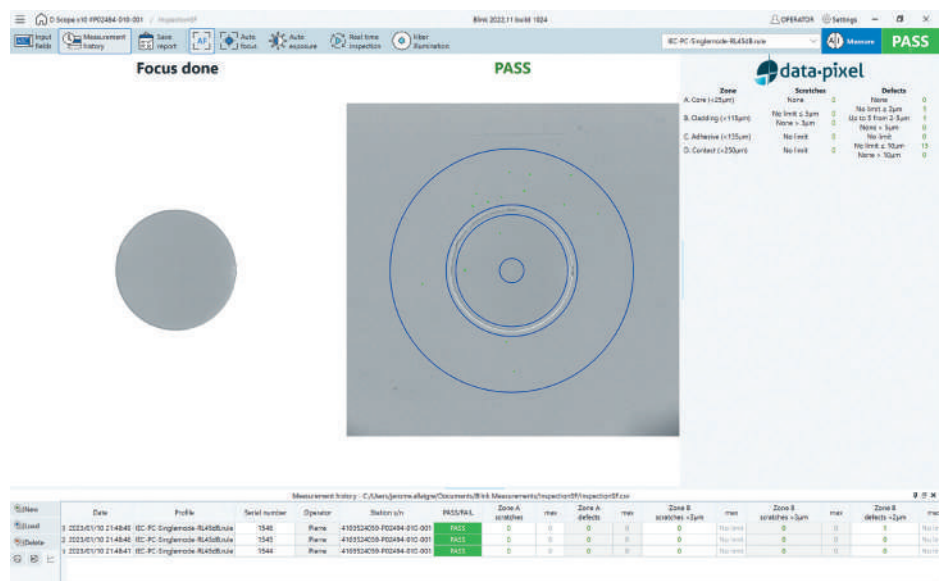
KEY FEATURES:

- True Koehler optical design for homogeneous lighting
- Real time detection and analysis of surface defects with Blink software
- Independent gain and contrast levels for fiber and ferrule regions
- Adaptors for all PC & APC, Single-Fiber connectors
- High speed USB 2.0 for live digital image
- Deep blue long life LED light source
- Second stray-light source for surface cleanliness inspection (optional)
- Ergonomic fine focus control
- Automation capabilities
- Compatible with desktop PC, laptop, tablet PC

**DEEP LEARNING
INSIDE**

With BLINK, the Data-Pixel software platform, D Scope SF uses Deep Learning technology. This AI has the advantage of improving the detection of defects, but above all, of being scalable.

If you want to deal with specific defect or atypical fiber cases, Blink's Deep Learning can be taught to recognize defects from your samples.

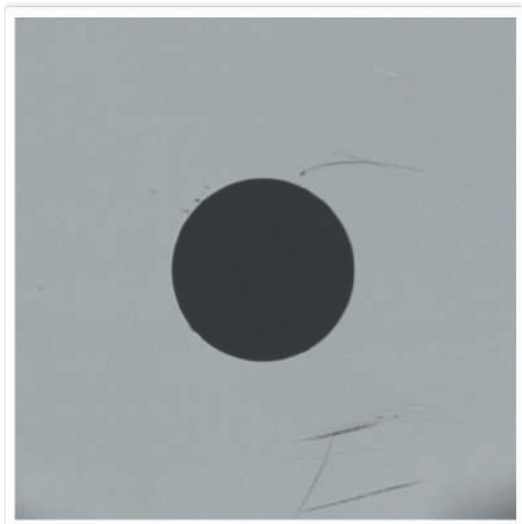
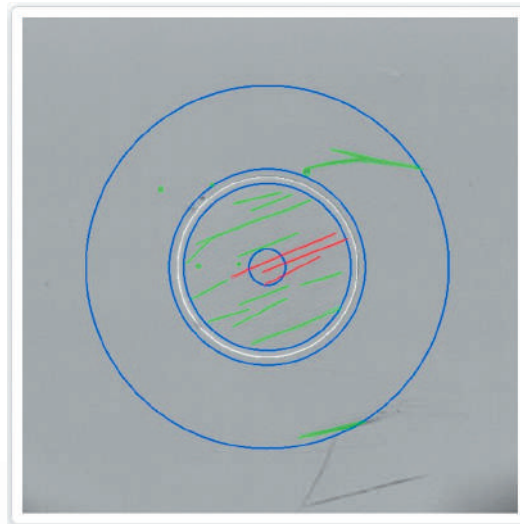


中国大陆代理商

深圳市谱兆通讯设备有限公司

Tel: +86-755-8665-5448; +86-755-8665-5579; Email: info@pztest.com Website: www.pztest.com

| Magnification : | D Scope x4 | D Scope x10 | D Scope x20 |
|-------------------------|--|---------------------|-------------|
| Magnification | 200 | 400 | 800 |
| Field of View (mm x mm) | 1.7 x 1.3 | 0.7 x 0.5 | 0.3 x 0.3 |
| Light source | coaxial stray-light | coaxial stray-light | coaxial |
| Focus | manual | manual/auto | manual |
| Blink Inspection SF | optional | ✓ | optional |
| Power supply | via USB 2.0 (manual) - 12V (autofocus) | | |
| Weight (kg) | 2 | | |
| Dimensions HxWxL (mm) | 78 x 140 x 250 | | |

FERRULE LIVE IMAGE:**AUTOMATIC PASS/FAIL RESULT :****ORDER OPTIONS :**

| | |
|--|-------------------|
| D scope unit with : - Autofocus - x 400 magnification - Blink Inspection SF | 70-DSHM-V1-A10-00 |
| D scope unit with : - Manual focus - x 800 magnification | 70-DSHM-V1-M20-00 |
| D scope unit with : - Manual focus - x 200 magnification | 70-DSHM-V1-M04-00 |
| Adapter 1.25mm, PC | 30-AD-000301 |
| Adapter 1.25mm, APC | 30-AD-000302 |
| Adapter 2.50mm, PC | 30-AD-000303 |
| Adapter 2.50mm, APC | 30-AD-000304 |
| Adapter 1.25mm LC PC | 30-AD-001707 |
| Adapter 1.25mm LC APC | 30-AD-000312 |
| Adapter 2.50mm SC PC | 30-AD-002483 |
| Adapter 2.50mm SC APC | 30-AD-000310 |