

# FIP100

# FIBER OPTIC CONNECTOR INSPECTION SYSTEM

INSTALLATION | TESTING | TROUBLESHOOTING

The FIP100 is a fully automated inspection tool that provides fast and reliable analysis of fiber optic connector end faces and bulkheads. With a single button press, the FIP100 automatically focuses, captures an image of the connector endface and provides a pass/fail result. The pass/fail status of the connector is instantly reported via a red/green LED on the probe. Detailed results are shown on the iOS or Android app, which provides PDF report generation and sharing. Both apps are pre-loaded with pass/fail requirements from IEC 61300-3-35, as required by all major telecommunications service providers.

## Product Features:

- Test ferrule end faces and bulkheads compliant to IEC61300-3-35
- Single handed, one button operation
- Auto focus, auto capture, auto test
- LED pass/fail indicator on probe
- Small form factor enables inspection of difficult to reach ports
- Create and share reports on Android and iOS devices
- IEC, IPC and user defined inspection criteria
- Wide range of adapter tips

## Applications:

- Verify connector cleanliness before connecting
- Certify connector condition on installation
- Document connector damage when troubleshooting
- Inspection is an essential for proper fiber handling in all networks

**Pass/fail results in seconds:** With the press of a single button, the FIP100 auto-focuses, captures, centers and analyzes the end-face image to industry standard IEC 61300-3-35, IPC-8497-1, AT&T TP-76461 and other user-defined criteria.

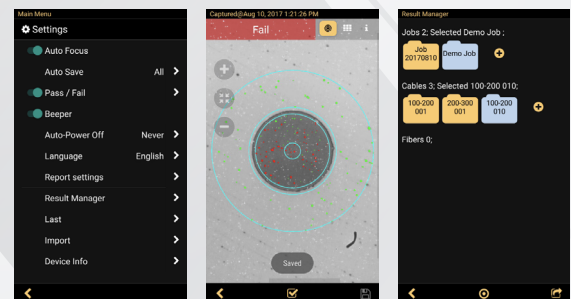
**Unfettered operation:** One-button operation and pass/fail LED indicator enables operation without reference to the mobile app.

**Wide range of adapter tips:** Interchangeable adapter tips support fiber connector inspection for a wide range of patch cords and bulkhead-mounted connectors having either PC/UPC or APC polished end-faces.



## SMART DEVICE APPS: FIP100

- Auto focus, auto capture and auto test functions
- IEC, IPC, industry standard, and user-defined inspection rules
- Pinch-to-zoom fiber end-face images
- Report generation
- Multi-language Graphical User Interface (GUI)
- Day/time stamped job saving



Follow us on Social Media  
@TempoComms



**TEMPO**  
COMMUNICATIONS

*Renewed Vision. Innovation Forward.*

## SPECIFICATIONS:

### OPTICAL PERFORMANCE

Field of View (FOV) <sup>a</sup>	Live and Captured: 612 x 460 µm;
Manual Detection Capability (minimum)	0.25 µm
Auto Analysis Resolution	<1.0 µm
Stored <sup>c</sup> Image Size	2592 x 1944 (5M) pixels
End-face Illumination	Coaxial blue LED 476 nm
Maximum No Damage Live Fiber Power Level	+20 dBm

### OPERATING FEATURES

WiFi Characteristics	IEEE 802.11bng
Focus	Auto-focus (≤3 sec) and manual focus
Centering	Auto-centering (<1 sec)
Button Functionality	Power On/Off (>3 secs); Capture/Analysis/Auto-save/Live
Main LED Functionality	Blue = Connected to App, Green = Pass, Red = Fail
Magnification <sup>b</sup>	Variable from 80X to 700X, in Live and Capture modes
Applications Compatibility	Android ≥4.0.3, iOS ≥8.1
Image Capture with Pass/Fail Analysis <sup>c</sup>	IEC 61300-3-35, AT&T TP-76461, IPC-8497-1, user-set criteria
Image File Format	JPEG, GIF
Image & Pass/Fail Results Storage <sup>c</sup>	Yes
File Storage Capacity <sup>c</sup>	Unlimited
Result Manager <sup>c</sup>	Storage, rename, delete, transfer
Reporting <sup>c</sup>	Built-in fillable PDF reporter
Supported Languages <sup>c</sup>	English, French, German, Japanese, Korean, Russian, Spanish

### PHYSICAL AND POWER CHARACTERISTICS

Battery Type	Li-Ion, non-replaceable by user
Maximum Charger Current Draw	1.2A, battery charge current + device consumption current
Operating Time (typical)	60 hours <sup>d</sup> ; 8 hours continuous
Recharge Time	≤4 hours
Low-Battery Warning	Viewed on smart device
Charging LED Status; viewed on smart device	Red = Charging, Green = Fully Charged, Blinking Red/Green = Battery Fault
Power Save Features (Controlled by App)	Probe Auto-Off - disabled, 5, 10, 30, 60 minutes; Probe WiFi Not Connected - 5 minutes
AC Charger Voltage, Frequency, Current	100-240VAC, 50/60Hz, 5VDC, 2A
Charger Jack	0.9 x 3.2 mm barrel, center (tip) positive
Size (Max Diameter x Length)	Ø 40 x 226 mm (Ø 1.6 x 8.9 in)
Weight	150 g (5.3 oz)

### ENVIRONMENTAL CHARACTERISTICS

Operating Temperature	0 to +50 °C; 95% RH, non-condensing
Storage Temperature	-40 to +70 °C; 95% RH, non-condensing

Notes:

a. All specifications valid at 23°C ±2°C (73.4°F ±3.6°F).

b. Viewed on Smart Device.

c. In iOS & Android Apps.

d. Operating conditions: 60 tests in 20 minutes, then auto-off; Repeat each hour

### Tempo Headquarters:

Tempo Communications, Inc.  
1390 Aspen Way, Vista, CA, 92081, USA  
Phone: 800 642 2155

**Latin America & Asia Pacific:** Phone: +1 760 510 0558

**EMEA:** Phone: +44 (0) 1633 927050

e-mail: [emeasales@tempocom.com](mailto:emeasales@tempocom.com)

### India & SAARC:

e-mail (sales): [indiasales@tempocom.com](mailto:indiasales@tempocom.com)

e-mail (technical): [indiasupport@tempocom.com](mailto:indiasupport@tempocom.com)

**TempoCom.com | tel 800.642.2155**

## CERTIFICATIONS:

CE/UKCA	EU	Compliant to relevant EU Directives on health, safety, and environmental protection, and certified with CE marking
Safety /EMC /EMI	IEC	Compliant to IEC 61010-1 for safety requirements for electrical equipment
	EN	Compliant to EN 55011 for EMC requirements for industrial, scientific and medical equipment
	FCC	Compliant to code of federal regulations FCC 47 CFR 15 on unlicensed transmissions
RoHS	EU	Compliant to EU regulations Directive 2011/65/EU (RoHS 2) and Directive 2015/863 (RoHS 3)
Test Method	IEC	Compliant to IEC 61300-3-35 for visual inspection of fiber optic connectors and fiber-stub transceivers
	IPC	Compliant to IPC-8497-1 for cleaning methods and contamination assessment for optical assembly

## ORDERING INFORMATION:

CAT NO	Description
FIP100 KIT	FIP100, power supply (NA, UK & EU), carry case, SC/UPC bulkhead tip, SC/UPC bulkhead and quick reference card.
FIP100 KIT-SC/APC	FIP100, SC/APC bulkhead tip, SC/APC bulkhead, SC/UPC bulkhead tip, SC/UPC bulkhead, power supply (NA, UK & EU), carry case and quick reference card.
FIP100 KIT-LC/UPC	FIP100, LC/UPC bulkhead tip, LC/UPC bulkhead, SC/UPC bulkhead tip, SC/UPC bulkhead, power supply (NA, UK & EU), carry case and quick reference card.
FIPCC	FIP100 carry case
FIPPS	FIP100 power supply with NA, EU and UK adapters
SCUPC BH	SC/UPC Bulkhead Tip
LCUPC BH	LC/UPC Bulkhead Tip
2.5MMUPC	2.5mm Universal UPC Tip
1.25MMUPC	1.25mm Universal UPC Tip
SCAPC BH	SC/APC Bulkhead Tip
LCAPC BH	LC/APC Bulkhead Tip
2.5MMAPC	2.5mm Universal APC Tip
1.25MMAPC	1.25mm Universal APC Tip
OTAP BH	OptiTap <sup>®</sup> Bulkhead Tip
LCUPC BH L60	LCUPC Long Reach 60mm Bulkhead Tip
U60 BH	Universal 60 Degree Adapter for Bulkhead Tip
MPO BH	MPO UPC and APC Bulkhead Tip
FIPT ADAPT	Adapter for VIAVI Tips



*Renewed Vision. Innovation Forward.*

an ISO 9001 / AS 9100 D (AS9104/1 Issue 2012-01) Company



Follow us on Social Media  
**@TempoComms**