



Data·Pixel



Koncentrik v2

APC

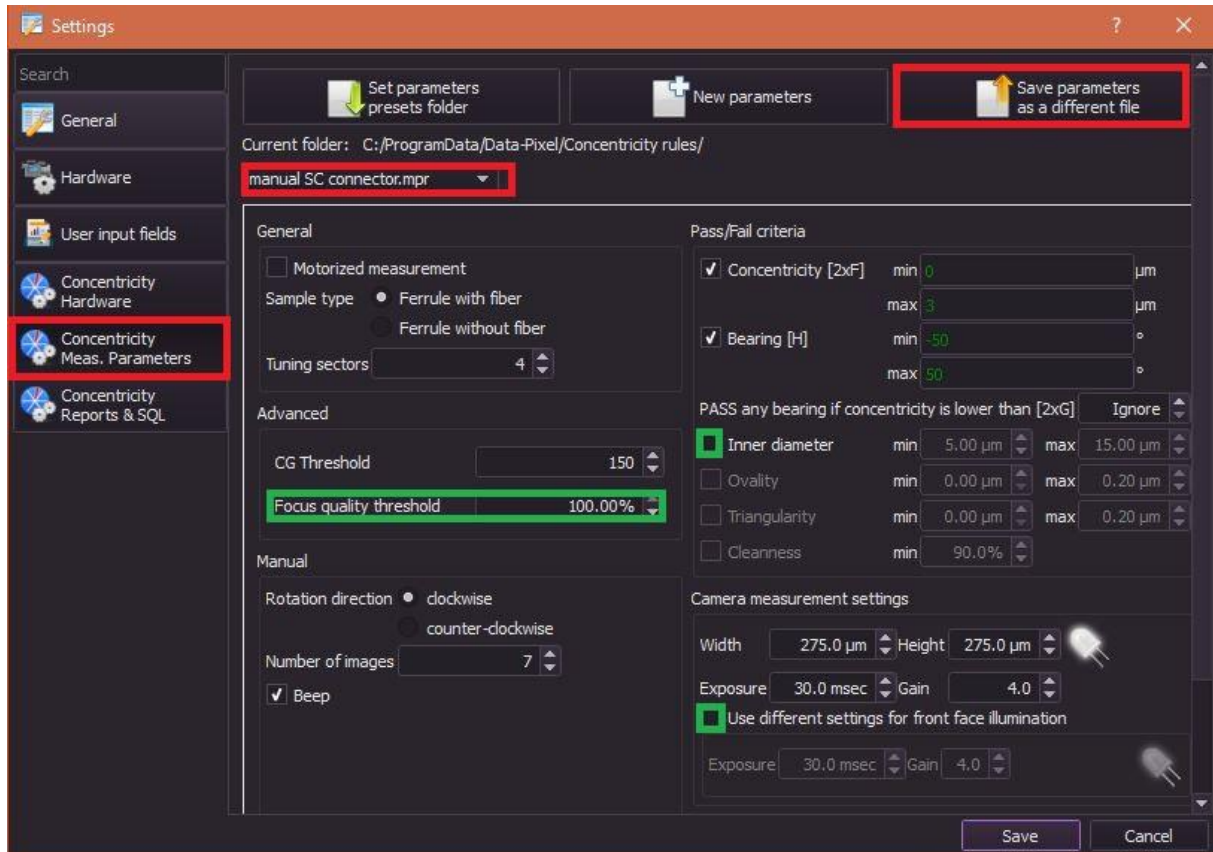
Support Document for APC measurements

For Hardware / Software setup up: see standard concentricity manual

In the BLINK software, you will need to create an APC concentricity parameter file.

Go to SETTINGS/CONCENTRICITY MEAS. PARAMETERS.

Select “manual SC connector”

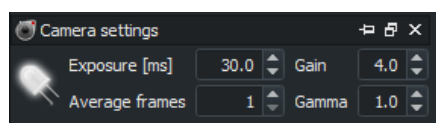


Modifications:

- Focus quality threshold = 100%
- Untick “Inner diameter”
- Untick “Use different settings for front face illumination”
- Click on “Save parameters as a different file”
- Save the file as: manual SC APC connector.mpr

Camera settings:

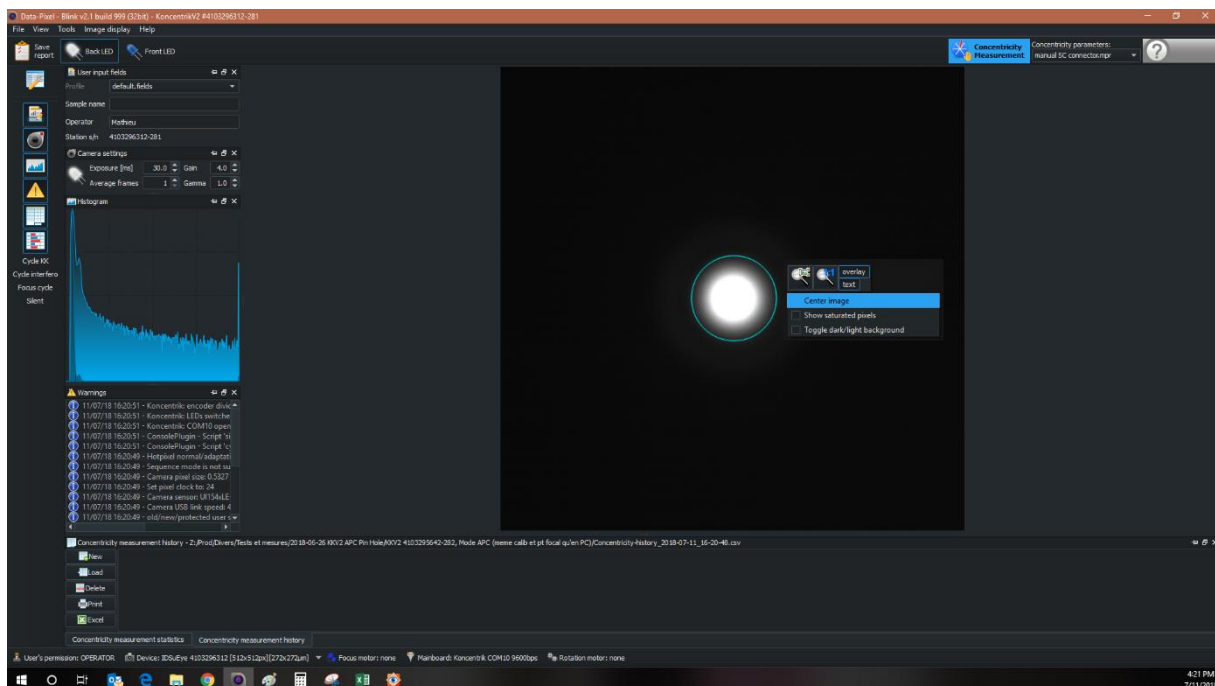
Set the exposure time at 30.0ms and the gain at 4.



To perform APC measurements, you need to use an external powerful light source.
We recommend to use the DCR III (150 W) light source at 100% power.



If needed, change to output light power to get something similar to the picture below.
To compare the size of the spot light, you can use the blue circle that is displayed when you right click on the image and select “Center image”.



Important information:

- There is no focus adjustment, and it's normal to see a blurry spot of light.
- It is important to do a complete and precise 360° turn of the connector during the measurement.
- The holder must be well adjusted for the connector (smooth unforced insertion but without any play)
- The connector plugged to the light source must be well aligned with the light beam and well held.
- It is essential to keep the focal plan unchanged during the rotation, so be sure that the connector is always fully inserted inside the holder.